

TOSHIBA

Leading Innovation >>>

Hybrid MFP

e-STUDIO3508LP

e-STUDIO4508LP

Product brochure

- > World's first multifunction systems with erasable print function.
- > Unique hybrid printing technology, one single device prints regular as well as reusable prints which saves paper.
- > Equipped with state-of-the-art features for modern document workflows.
- > Designed for businesses which want to combine ecology, economy and efficiency.



OUR BEST TECHNOLOGY TO ENHANCE YOUR BUSINESS

Optimising workflows to get the most out of available resources has become essential for businesses which want to be successful. We have designed our Hybrid MFP to offer you all features you need to be productive and efficient. But there's more: we have added a unique erasable print function, which can be selected in the printer driver just like any other setting.

Connect

Having access to your documents when you need is getting more and more important. We have made sure you get what you want, whenever you want and wherever you want.

- > **Multi Station Print** allows you to send print jobs from your computer and retrieve them at any convenient MFP by authenticating at that device, e.g. by swiping your badge.
- > **Cloud printing** ensures you have access to your documents no matter where you are. Our embedded apps let you send your documents directly to or print them from Microsoft OneDrive, Google Drive and Dropbox.
- > **Mobile printing** gives you the flexibility to print directly from your mobile device via AirPrint, Google Cloud Print, Mopria Print Service or our Toshiba e-BRIDGE Print & Capture app.

Integrate

The Hybrid MFP incorporates our latest e-BRIDGE technology. This makes it easy to integrate the system into your existing IT infrastructure and helps the administrators to work more efficiently. The open platform architecture also enables the creation of customised workflows, which simply complex scanning, archiving or other document management tasks.

Simplify

We strongly believe that good technology must be easy to use and that's how we designed the Hybrid MFP. The large tablet-like screen with an embedded web browser is easy to use and customisable to meet your needs. It gives direct access to all functions of the MFP and increases the efficiency of the users.



Toshiba's Hybrid MFP - all features you need in one unique system.

Reuse

Toshiba's Hybrid MFP comes with a unique feature: paper can be reused thanks to the erasable blue toner, which has a positive impact on the environment. The erasing can be done either via the Hybrid MFP or the optional paper reusing device, the e-STUDIO RD 301.

The world's first Hybrid MFP with erasable print function.



PRINTING HAS NEVER BEEN THIS GREEN

How does it work?

Very often we print documents, which are only needed temporary, e.g. to proof-read a document or as a reminder to do something. For these cases Toshiba's hybrid system gives you the possibility to select the erasable blue toner, so that when you don't need your document anymore, you don't have to throw the paper away, but can delete whatever was printed on it and reuse the sheet. To make it easier rule-based printing can be activated in the printer driver. This allows you to define multiple rules for the printer driver to then automatically select the blue toner e.g. for all e-mails and faxes as these type of documents usually tend to be used only temporarily.

To easily track how much you have already saved the e-BRIDGE Paper Reuse Report generates reports which calculate the paper reduction, the average usage of paper etc. to show you your environmental contribution at a glance.

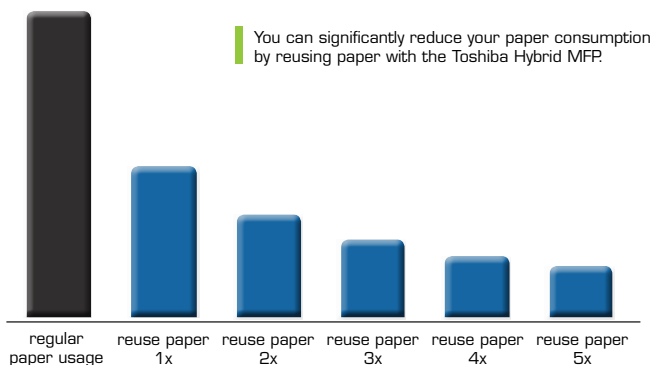
How can the toner be erased?

The Hybrid MFP itself is capable of erasing the toner. Simply place the used paper into the designated paper cassette and start the process. The blue toner will be de-colourised and you can then place the erased sheets back into the cassette of the MFP to print on it again.

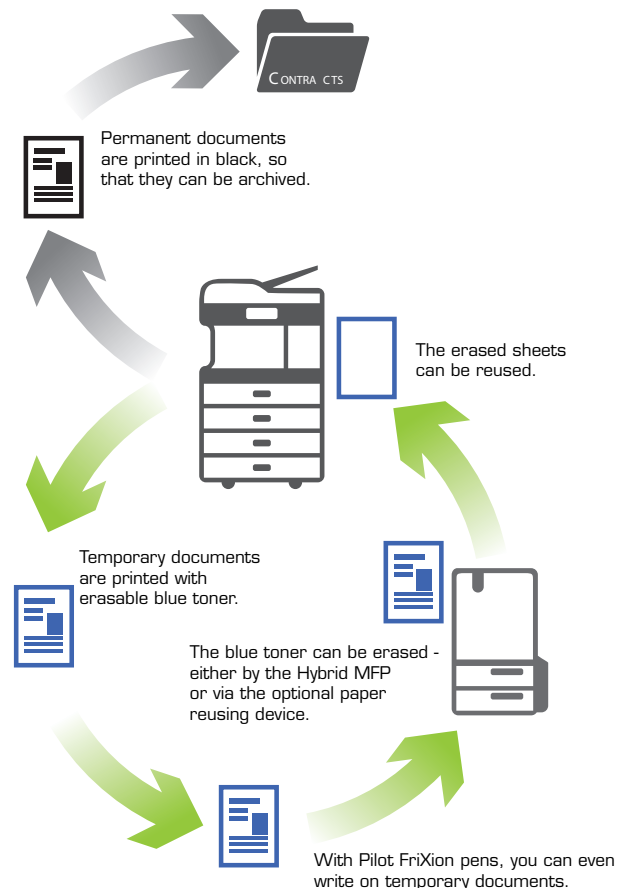
Alternatively, you can use the optional e-STUDIO RD301 - an erasing unit with advanced features. Not only does it erase at a speed of up to 30 ppm, it also sorts the paper into reusable and non-reusable paper. Additionally, it can also digitise the documents for electronic archiving before erasing the toner.

What is the benefit?

Assuming that you use a sheet of paper five times (i.e. reuse it four times) and you print 4,000 erasable pages per month, you can save 80% paper. This means that after five years you would have saved almost 200,000 sheets of paper. In other words The same amount of paper which you would usually use in one year, will now last five years.



Besides saving costs for paper (purchasing, storage and disposal) there is also a significant environmental benefit as you automatically reduce the carbon emission and water consumption, which is generated during the paper production.



KEY FEATURES

- > A unique monochrome system with a speed of up to 45 pages per minute (ppm) and up to 35 ppm in erasable blue ensures the Hybrid MFP can handle even large jobs effortlessly.
- > A customisable, tablet-like user interface, gives easy access to the print, scan, copy, fax and erase functions.
- > Utmost data security thanks to features such as the self-encrypting Toshiba Secure HDD and further optional security functions for IEEE2600.2 compliance.

SPECIFICATIONS

General

Print & Copy Speed	Black: 35/45 ppm (A4) Erasable Blue: 35/35 ppm (A4)
Erase Speed	Drawers: 17.5 ppm (A4) Bypass: 14.5 ppm (A4)
Warm-up Time	Approx. 22/26/26 seconds from low power mode
Paper Size & Weight¹⁾	Drawers: A5R-A3, 60-256 g/m ² Bypass: 100 x 148 mm-A3, 60-256 g/m ²
Paper Capacity	2x 550 sheets (Drawers) ²⁾ , 1x 100 sheets (Bypass) ³⁾ Maximum 3,200 sheets
Inner Output Tray (virgin/reusable paper)	With Bridge Kit: 150/120 sheets Without Bridge Kit: 400/320 sheets
Automatic Duplex¹⁾	A5R-A3, 60-256 g/m ²
Controller Type	Toshiba e-BRIDGE Next
Control Panel	22.9 cm (9") Multi-Touch Colour Panel
Memory	Toshiba Secure HDD 320 GB ⁴⁾ , 4 GB RAM
Interface	10Base-T/100Base-TX/1000Base-T
Dimensions & Weight	585 x 640 x 787 mm (W x D x H), approx. 73 kg

Print

Resolution	600 x 600 dpi, 5 bit, 1,200 x 1,200 dpi, 2 bit (equiv. 3,600 x 1,200 dpi) with PostScript driver
Page Description Language Supported Systems	PCL5e, PCL5c, PCL6 (PCL XL), XPS and PostScript 3 compatible Windows 10/8.1/7/Server 2008 (32/64 bit), Windows Server 2016/Windows Server 2012 Windows Server 2012R2/Server 2008 R2 (64 bit), Mac OS X 10.6.8-10.12, Linux/Unix, Citrix, Novell SLES, SAP, AS/400
Network Protocols	TCP/IP (IPv4/IPv6), IPX/SPX, EtherTalk, NetBios over TCP/IP
Toner Modes	Erasable Blue, Black
Mobile Printing	e-BRIDGE Print & Capture, AirPrint, Mopria Print Service, Google Cloud Print
Print Functions	Universal Printer Driver, Driver Templates, Driver plug-ins ⁵⁾ , Print from USB, Hold print, Tandem printing

- ¹⁾ Paper weight for Erasable Blue mode: 64-80 g/m².
²⁾ If drawer is used for reusable paper, paper capacity of drawer is max. 400 sheets.
³⁾ If bypass is used for reusable paper, paper capacity of bypass is max. 30 sheets.
⁴⁾ 1 GB = 1 billion bytes; the actual formatted capacity is less. Available capacity will also be less if software applications are pre-installed.
⁵⁾ Optional
⁶⁾ Finishing functions are not available when printing in Erasable Blue. Paper capacity for reusable paper differs.

Scan

Resolution	Maximum 600 x 600 dpi
Scan Speed	Reversing Automatic Document Feeder ⁶⁾ : up to 73 ipm (300 dpi) in colour and monochrome Dual Scan Document Feeder ⁶⁾ : up to 240 ipm (300 dpi) in colour and monochrome
Scan Modes	Auto-Colour (ACS), Colour, Greyscale, Monochrome
File Formats	JPEG, Multi/Single Page TIFF/XPS/PDF, Secure PDF, Slim PDF, PDF/A, Searchable PDF ⁶⁾ (and other formats like DOCX, XLSX) ⁶⁾
Scan Functions	WS Scan, Scan to USB, Scan to E-Mail, Scan to File (SMB, FTP, FTPS, IPX/SPX, Local), Meta Scan ⁶⁾ , OCR scan ⁶⁾ , Scan to Box (e-Filing), WIA, TWAIN

Copy

Resolution	Scan: 600 x 600 dpi Print: 600 x 600 dpi, 2,400 (equiv.) x 600 dpi with smoothing
First Copy Output Time	Black: Approx. 5.9/4.4 Erasable Blue: Approx. 7.8/7.8
Zoom	25-400% (Platen), 25-200% (RADF/DSCF) ⁶⁾
Copy Modes	Text, Text/Photo, Photo, Blue Original
Copy Functions	Electronic Sort, Rotate Sort, ID Card Copy, Edge Erase, 2-in-1 / 4-in-1 mode

Fax⁵⁾

Communication	Super G3, G3 - (opt. 2 nd line), Internet Fax T.37
Transmission Speed	Approx. 3 seconds per page
Compression	JBIG, MMR, MR, MH
Fax Memory	1 GB Transmission/Reception
Network-Fax	Driver for Windows 10/8.1/7/Server 2008 (32/64 bit), Windows Server 2016/Windows Server 2012 Windows Server 2012R2/Server 2008 R2 (64 bit),
Incoming Fax Routing	To shared folders (SMB, FTP, IPX/SPX), E-Mail, e-Filing

Accessories (Options)

e-STUDIO RD 301	Paper Reusing Device to scan, erase and sort 100-sheet capacity (Document feeder) 400-sheet capacity (Re-usable paper drawer) 100-sheet capacity (Rejected paper drawer) A5R-A4R, 64-80 g/m ² 100-sheet capacity, A5R-A3, 35-157 g/m ²	PLATEN COVER - KA-5005PC DESK - MH-5000 ENVELOPE DRAWER - MY-1049 JOB SEPARATOR - MJ-5015 FAX BOARD - GD-1370 CARD READER HARD DISK DRIVE 320 GB⁶⁾ (FIPS 140-2 STANDARD) - GE-1230 ACCESSORY TRAY - GR-1250 PANEL TEN-KEY OPTION - GR-1260 WORK TRAY - KK-5005 DATA OVERRWRITE ENabler - GP-1070 IPsec ENabler - GP-1080 EMBEDDED OCR ENabler - GS-1080/1085 MULTI STATION PRINT ENabler - GS-1090/1095 META SCAN ENabler - GS-1010 UNICODE FONT ENabler - GS-1007 ACCESSIBLE ARM - KK-2560
REVERSING AUTOMATIC DOCUMENT FEEDER (MR-3031)		
DUAL SCAN DOCUMENT FEEDER (MR-4000)	300-sheet capacity, A5R-A3, 35-209 g/m ²	
PAPER FEED PEDESTAL¹⁾²⁾ (KD-1058)	550-sheet capacity (1 Drawer), A5R-A3, 60-256 g/m ²	
DRAWER MODULE¹⁾²⁾ (MY-1048)	For Paper Feed Pedestal 550-sheet capacity (1 Drawer) A5R-A3, 60-256 g/m ²	
LARGE CAPACITY FEEDER (KD-1059)	2,000-sheets capacity, A4, 64-105 g/m ² Not for reusable paper	
INNER FINISHER⁶⁾ (MJ-1042)	2 trays, 600-sheet capacity 50-sheet multi-position stapling B5-A3, 60-105 g/m ² (stapling mode)	
MULTI STAPLE FINISHER⁶⁾ (MJ-1109)	2 trays, 2,250-sheet capacity 50-sheet multi-position stapling B5-A3, 60-105 g/m ² (stapling mode)	
SADDLE-STITCH FINISHER⁶⁾ (MJ-1110)	2 trays, 3,250-sheet capacity 50-sheet multi-position stapling 5-sheet center folding Saddle-stitched booklets of up to 60 pages B5-A3, 60-105 g/m ² (stapling mode)	
HOLE PUNCH UNIT⁶⁾ (MJ-6105)	Available in 2 holes	



This is Class 1 laser product complying with IEC60825-1.

Windows is a registered trademark of Microsoft Corporation in the United States and other countries. iPad, iPhone, iPod, and iPod touch are trademarks of Apple Inc., registered in the U.S. and other countries. AirPrint and the AirPrint logo are trademarks of Apple Inc. IDS is a registered trademark of Cisco in the United States and other countries and is used under license. Android is a trademark of Google Inc. All other brand and/or product names are trademarks of their respective owners. Mention of third party products herein is for informational purposes only.

This brochure was compiled based on information that was accurate prior to product launch. Product design and specifications are subject to change without notice. The colour(s) of the actual product may vary from the colour(s) shown in this brochure. No part of this material may be used or reproduced in any manner whatsoever without permission. 1GB is equivalent to 1 billion bytes. Warm-up time and print speed may vary depending on the operating environment. ©2017 TOSHIBA TEC.

As an ENERGY STAR Partner TOSHIBA TEC CORPORATION has determined that this multifunctional device model meets the ENERGY STAR guidelines for energy efficiency.

All company and/or product names are trademarks and/or registered trademarks of their respective owners. All features and specifications described in this brochure are subject to change without notice.
 ©2017 TOSHIBA TEC. All rights reserved.
Hybrid MFP - 20170424

For more information, please call or visit us at

TOSHIBA

TOSHIBA TEC MALAYSIA SDN BHD (66785 D)

4, Jalan Saudagar U1/16, Seksyen U1, Hicom Glenmarie Industrial Park,
40150 Shah Alam, Selangor Darul Ehsan, Malaysia.

Tel : 03-5568 7373 Service Hotline : 03-5568 7699 Fax : 03-5568 7992

Website : www.toshibatec.com.my