

Interactive Flat Panel Displays (IFPDs)

RICOH IFPD's with optional Business or Windows® Controller

D5520, D6510, D7500 and
D8400



Remotely
collaborate with
laptops and
mobile devices

No external
computer
required

Brilliant HD
and 4K
multi-touch
screens
(55" – 84")

Available video-
conferencing
services

Collaborate and videoconference more securely

Transform your workplace for today's more collaborative, ad hoc and mobile workstyles—while helping to protect your sensitive information—with our Interactive Whiteboards (IWBs) with Business Controllers. Choose from two models of IWBs—also known as Interactive Flat Panel Displays (IFPDs)—with screen resolutions and sizes of 4K 75" (D7500) and 4K 84" (D8400). Both IWBs with business controllers must exist behind your firewall to help safeguard your ideas from today's advanced cyber threats.

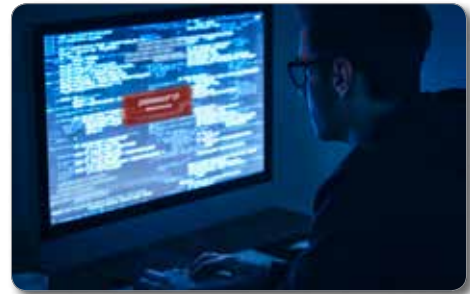
Increase team participation

Inspire more participation during meetings and presentations with our enterprise-grade displays. Showcase complex graphics and important documents in brilliant 3840 x 2160 4K resolution that includes 10-bit processing of more than one billion colors. Bring team members and customers into the moment during remote meetings and presentations with precise details and lifelike images and video. The anti-glare touchscreen with LED backlighting helps to ensure that viewers can see what is on your screen in almost any lighting conditions. Use our IWBs with their embedded controllers to present, or as displays only and connect via VGA, HDMI, DVI-D or DisplayPort. The multi-point touchscreen lets you easily switch between tasks and make natural drawings and handwritten annotations, zoom in and zoom out, and undo changes with your fingers.



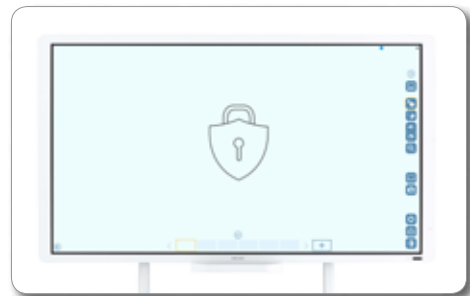
Defend against viruses and malware

Prevent users from intentionally or accidentally installing viruses, malware, ransomware and other cyber threats onto our business controllers, which do not allow users to add new software. McAfee™ software further protects the business controller by preventing any software modifications. Only administrators can access the controller's configuration settings. Administrators can only conduct web-based configurations after physically changing the administrator password, helping prevent users and hackers from bypassing your security policies.



Defend against advanced threats

Help overcome vulnerabilities with network security and risky user behavior. With network security safeguards, you can password protect PDF files to help ensure document security when distributed on or off your network. Our business controllers restrict access to users on your network. This helps to prevent theft of your ideas and intellectual property. Your huddle, meeting and videoconferencing rooms can become digital business hub environments without the increased risks of straying off your network. The business controller can save your documents to convenient local file storage using a meeting code for 1 to 30 days. After codes expire, your files will be automatically deleted. With user behavior safeguards, when a user logs off, information on the IWB screen disappears and cannot be recovered.



Collaborate across your private network

Add the optional collaborative license to interact in real-time on your private network—with the cost-effectiveness, scalability and platform flexibility of the public cloud—collaborate bi-directionally with up to 19 additional IWBs. Each licensed IWB can then connect with as many as 50 laptops and mobile devices.



Work smarter in groups

Empower your onsite and remote workers, clients or customers to become more engaged in real-time collaboration and meetings with our Interactive Whiteboards (IWBs) with Windows® 10-based Controllers. Our Windows® controller lets you use your preferred apps and cloud solutions including Office 365™ and Skype® for Business. Select from four models of IWBs—also known as Interactive Flat Panel Displays or IFPDs—with screen resolutions and sizes of HD 55" (D5520), HD 65" (D6510), 4K 75" D7500, and 4K 84" (D8400). Bundle the IFPDs with our visual communication hardware, apps, cloud services and business services for all-in-one solutions that can fully meet your business needs. Now, convert any area into a modern collaborative space where you can brainstorm ideas faster, conveniently manage complex projects and training, and transform presentations into interactive experiences with touchscreen annotations, video communications and information sharing.

Maximize engagement

Showcase important graphics or documents, and convey your ideas clearly in crisp 1920 x 1080 HD resolution—or brilliant 3840 x 2160 4K resolution that includes 10-bit processing of more than one billion colors. This helps your participants notice precise details and see lifelike quality. The anti-glare touchscreen with LED backlighting and deep contrast help to ensure that participants can see what is on the screen in almost any lighting conditions. Use the IFPDs with their embedded controller to present, or use the IFPDs as displays only and connect via VGA, HDMI, DVI-D or DisplayPort. The 10-point touchscreen allows you to easily switch between tasks and make natural drawings and handwritten annotations, zoom in and zoom out, and undo changes with your fingers.



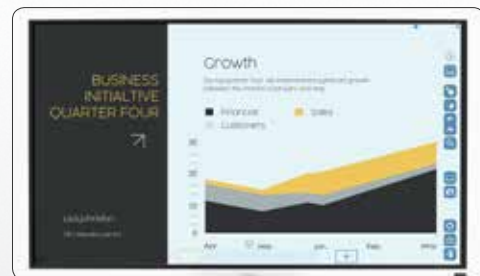
Collaborate across your network

Whether your group is small or includes hundreds of participants, you can find the most effective and cost-efficient way to scale real-time collaboration on our IFPDs. If you choose to stay on your private network, you can add a collaborative license to our IWB Lt. software. This lets you connect with two-way collaboration with up to 19 additional IFPDs. Each licensed IFPD can connect to as many as 50 endpoints (laptops and mobile devices) also with real-time, two-way collaboration. That means that you could distribute 20 licensed IFPDs on your network and interactively collaborate with up to 1,000 participants without adding an additional public cloud service fee. You can use the public cloud to collaborate and project manage via Skype® for Business, Google Hangouts®, Join.Me®, JIRA® and more solutions.



Get started in a snap

Our IFPDs with Windows®-based controllers are ready out-of-box solutions. There's no need to connect the IFPDs to a dedicated computer to operate the display, or use expensive proprietary software with recurring maintenance fees. And with their highly intuitive user experience, you can conveniently deploy the IFPDs at locations with limited or no IT support. You can also connect the IFPDs to Ricoh digital projectors to present and interactively collaborate with large groups. Bundle the IFPDs with our mobile stand to easily move them about your workplace.



Designed for ongoing value

Accelerate wide user adoption

There's no need to connect to a dedicated computer to operate the display or use expensive proprietary software with recurring maintenance fees. And with the simple intuitive user experience, you can deploy the IWBs at locations with limited or no IT support. And because our IWBs are natively interoperable with other Ricoh products and services, you can easily connect them to Ricoh digital projectors to present to and interactively collaborate with large groups. Configure our IWBs with a Ricoh mobile stand to easily move them about your workplace.



Improve teamwork effectiveness

In today's workplace, both workers and customers greatly value their time and work-life balance. That's why teamwork must become more effective with video and genuine face-to-face interactions. When you can see the facial expressions and body communication of your remote team members, clients or customers, you can enhance collaboration—while significantly saving on the time and costs of physical meetings that may be difficult or impossible to promptly schedule. You can also install our optional UCS software, which enables painless videoconferencing that takes up no more than 2 MBps—you don't have to worry about interruptions due to limited bandwidth or slow network speeds.



Maximize your ROI

For more than 80 years, we have helped our customers get the most from their IT investments. As the workplace has changed, we have also evolved our expertise in workplace productivity to include workstyle innovation with a special focus on business collaboration and visual communication technology, services and consulting. We want to partner with you on your journey to accelerate your workplace and workstyle transformations. Our SMB and global enterprise teams can help you expertly deploy all-in-one collaboration solutions that meet your unique business needs—depending on your available IT resources. You can bundle our IWBs with enterprise-grade products from our complete portfolio of audio and video conferencing equipment, enterprise apps and cloud services. We also offer implementation services, huddle and meeting room planning, 24/7 global support and business technology consulting to help accelerate your path to more secure and effective business collaboration.



To view detailed features of our multifunction products online go to www.ricoh.ca/products

Easy to use

Interact face-to-face

You can better engage remote participants when you can see their facial expressions and body communication. That's why we offer optional videoconferencing hardware and software for our IFPDs to help you clearly communicate your ideas and get more work done faster. With our Windows®-based controller, you can decide whether to use the Ricoh UCS or UCS Advanced Service, or use Skype® for Business and other popular collaboration apps. Our optional UCS Service enables you to collaborate with large numbers of remote participants in many different locations. And because our UCS Service takes up no more than 2 MBps, you don't have to worry about interruptions due to limited bandwidth or slow network speeds. If you want to help ensure that you can start web or video conferences without delays, use the RICOH® UCS Service Advanced, an open WebRTC solution, to let your remote participants painlessly join presentations or collaborate with you from any online mobile device, laptop or legacy videoconferencing equipment.



Simplify your configuration

Our IFPDs with Windows®-based controllers are built from the ground up for modern collaboration, rather than assembled from multiple pieces, such as when a mini PC is simply mounted onto a touchscreen monitor. Mounted mini PCs are at increased risk of being stolen, and may also interrupt consistent performance, since they require video cables for connectivity—rather than the more reliable bus connections that link our embedded Windows®-based controller directly to its touchscreen display. Our completely integrated solution also helps you scale seamlessly. Add more of our IFPDs to your network without worrying about incurring more fees for ongoing IT maintenance including updating of third-party management software.



Get the most from your investment

For more than 80 years, we have helped enterprises maximize the ROI of their IT investments. As you take the journey to transform your workspace for today's faster, more collaborative work styles, we want to partner with you step by step. Benefit from our expertise and 24/7 global customer support, so you can focus on competing in a smarter, faster business world. Let us focus on keeping your collaboration technology ahead of trends and providing the services to help you thrive in the information economy. And we believe that relationships matter: Wherever you deploy our IFPDs, our extensive network and optional business services will be there to help you reach your goals.



To view detailed features of our multifunction products online go to www.ricoh.ca/products

RICOH D5520/ D6510/ D7500/ D8400

SYSTEM SPECIFICATIONS

Model	D5520	D6510	D7500	D8400
Panel size	55" (48.5" horizontal x 27.9" vertical)	65" (56.2" horizontal x 31.6" vertical)	75" (65.9" horizontal x 37.5" vertical)	84" (73.25" horizontal x 41.2" vertical)
Display type/ Backlight	Liquid Crystal Display (LCD)/ LED system			
Resolution	1,920 x 1,080 dpi	1,920 x 1,080 dpi	3,840 x 2,160 dpi (4K)	3,840 x 2,160 dpi
Color	16.7 million (8 bit color processing)		1.07 billion (10 bit color processing)	
Brightness	450 cd/m ²	350 cd/m ²	410 cd/m ²	350 cd/m ²
Aspect ratio	16:9			
Contrast ratio	1,100:1	4,000:1	1,200:1	1,400:1
Pixel pitch	0.630 x 0.630 mm	0.744 x 0.744 mm	0.429 x 0.429 mm	0.4845 x 0.4845 mm
Response speed	12 milliseconds	8 milliseconds		5 milliseconds
Viewing angle (H/V)	Left and Right: 178° Up and Down: 178°			
Display glass	3 mm thick anti-glare glass			4 mm thick anti-glare glass
Touch sensor				
Technology	Shadow Sense			Infrared Touch
Maximum touch points	10 [When IWB software is active, max. number of touch points is 4]			
Touch resolution	1,920 x 1,080 dpi	1,920 x 1,080 dpi	12bit X, 12 bit Y (Sun pixel on FHD)	1,920 x 1,080 dpi
Touch screen interface	USB 2.0 Type B (located on side panel; D7500 and D8400: located on the bottom)			
Touch accuracy	+/- 6.5 mm (over 90% area)			+/- 10 mm (over 90% area)
Operating system support	Multi-touch (up to 10): Windows® 7, 8, 8.1, 10 Single Touch: Windows® 7, Mac® OS 10.6+			
General				
Video input	Mini D-Sub 15-pin (VGA) x 1, HDMI x 1 (HDCP compliant), DVI-D x 1 (HDCP compliant; D8400: DVI-D x 2), DisplayPort x 1 (HDCP compliant), USB 2.0 Type A (for video device power supply only)			
Video output	DisplayPort x 1			
Audio input / output	In: 3.5 mm Line in Jack x 1 (For VGA, DVI) Out: +/- Speaker Terminals x 1 pair			
Touch screen control	USB 2.0 Type B x 1			
Display control	RS-232c x 1 (Input), RS-232c x 1 (Output)			
Dimensions (W x D x H)	52.9" x 4.7" x 30.3" (1,345 x 119 x 770 mm)	60.9" x 6.0" x 34.9" (1,546 x 154 x 888 mm)	70.2" x 7.8" x 41.5" (1,783 x 198 x 1,055 mm)	76.2" x 5.16" x 44.56" (1935 x 131 x 1134mm)
Weight	101.4 lbs. (46 Kg)	132.3 lbs. (60 Kg)	205.0 lbs. (93 Kg)	228.8 lbs. (104 kg)
Power source	AC 100 – 240 V / 50 – 60 Hz			
Power consumption operating / standby	< 255 W / < 0.5 W	< 350 W / < 0.5 W	< 420 W / 0.5 W	< 564 W / < 0.5 W
Power consumption standby	< 0.5 W			
Advanced display features	RS232 Control Daisy Chain, Picture Mode (including Low Blue Light mode), Backlight, Adaptive Contrast (Dimming Control), Brightness, Chroma, Phase, Sharpness, Color Temperature, Treble, Bass, Balance, Volume, Mute, Speaker, Audio Source, Picture-in-Picture, Picture-by-Picture, Aspect, Adjust Screen, Touch Feature, Language, Power Save, Control Setting, Touch Control Setting, Set Monitor ID, Advanced Features, Information			
Remote sharing function	Up to 20 interactive whiteboards and projector systems. Up to 20 browser viewers per interactive whiteboard (business controller only). Up to 50 remote devices (iOS®, Android® and Windows®)			
Remote PC operation	Yes			
Bluetooth	Supported, v2.1+EDR V3.0/V4.0	Supported, v2.1+EDR V3.0/V4.0	V2.1 + EDR v3.0/v4.0	N/A
Windows® 10 Controller				
CPU	Intel® Core i5 6500TE 2.3GHz			
Operating System	Windows 10®			
HDD	500 GB			
RAM	16 GB			
Business (Ricoh) Controller	Current not supported with the D5520			
CPU	Intel® Core i5 4590T 2.1GHz			
Operating System	Windows® Embedded Standard 8 64bit			
SSD	64 GB			
RAM	8 GB			
Options				
Interactive whiteboard stands	Type 2	Type 3	Type 4	Type 4
More options	Pen Sensor Kit Type 3, Interactive Whiteboard Remote License Type 1			
Web/videoconferencing options	Built-in speakers: 12 W x 2 (Stereo) Built-in microphone: 58 dB S/N Ratio Optional video camera: Camera Unit Type 1	Built-in speakers: 12 W x 2 (Stereo) Built-in microphone: 58 dB S/N Ratio Optional video camera: Camera Unit Type 1	Built-in speakers: 12 W x 2 (Stereo) Optional video camera: Camera Unit Type 1	Built-in speakers: 12 W x 2 (Stereo) Optional video camera: Camera Unit Type 1

Item	Description	EDP Code
IWB Remote license	Add the optional collaborative license to interact in real-time on your private network—with the cost-effectiveness, scalability and platform flexibility of the public cloud—collaborate bi-directionally with up to 19 additional IWBs. Each licensed IWB can then connect with as many as 50 laptops and mobile devices.	720431128
IFPD Windows® Controller	Standard with Windows®10 PRO, Ricoh IWB Lt software, Ricoh UCS Standard and Ricoh UCS Advanced Video Conferencing Software (Subscription required), and Chrome Browser. Customers will be responsible for all 3rd party software and applications, including anti-virus and malware applications to be installed on the Windows 10 Controller. Ricoh Canada will only provide telephone support for the Ricoh IWB Lt software, UCS Advanced, and UCS Standard that is preloaded on the controller. All other operating system support should be directed to Microsoft or the 3rd party application that was installed.	731432308

Item	Description	EDP Code
Business Controller	Transform your workplace for today's more collaborative, ad hoc and mobile workstyles—while helping to protect your sensitive information—with our Interactive Flat Panel Display (IFPD) with Business Controllers.	731432071
Pen sensor	Optional Pen Sensor Kit for the D5520, D6510, and D7500 Interactive Flat Panel Displays	731432219
Camera unit	Optional Camera for Video Conferencing with the Windows Controller. Supported IFPD: D5520, D6510, and D7500	731432221
Wireless Touch Keyboard	Logitech® Wireless Touch Keyboard and Touchpad	920007119
55" IFPD	D5520 Interactive Flat Panel Display	730432206
65" IFPD	D6510 Interactive Flat Panel Display	730432212
75" IFPD	D7500 Interactive Flat Panel Display	730432224
84" IFPD	D8400 Interactive Flat Panel Display	730432098
IFPD Stand 55"	Optional Stand for the 55" IFPD	431196
IFPD Stand 65"	Optional Stand for the 65" IFPD	432135
IFPD Stand 75 and 84"	Optional Stand for the 75 and 84" IFPD	432290

RICOH
imagine. change.

www.ricoh.ca

Ricoh Canada Inc., 100-5560 Explorer Drive, Mississauga, ON L4W 5M3, 1-888-742-6417

©2017 Ricoh Canada Inc. All rights reserved. Ricoh® and the Ricoh logo are registered trademarks of Ricoh Company, Ltd. All other trademarks are the property of their respective owners.

The content of this document, and the appearance, features and specifications of Ricoh products and services are subject to change from time to time without notice. Products are shown with optional features. While care has been taken to ensure the accuracy of this information, Ricoh makes no representation or warranties about the accuracy, completeness or adequacy of the information contained herein, and shall not be liable for any errors or omissions in these materials. Actual results will vary depending upon use of the products and services, and the conditions and factors affecting performance. The only warranties for Ricoh products and services are as set forth in the express warranty statements accompanying them.