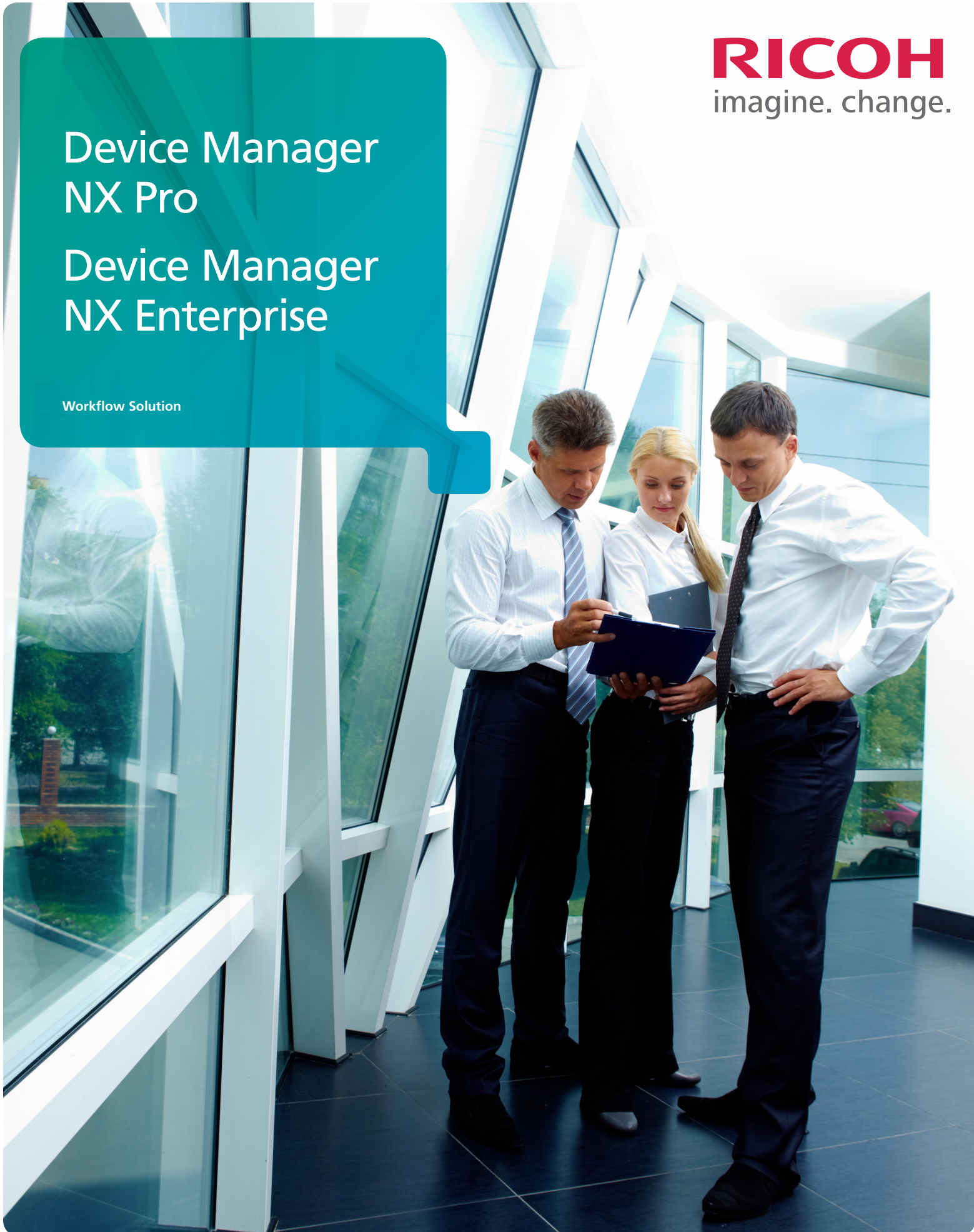


RICOH
imagine. change.

Device Manager
NX Pro

Device Manager
NX Enterprise

Workflow Solution

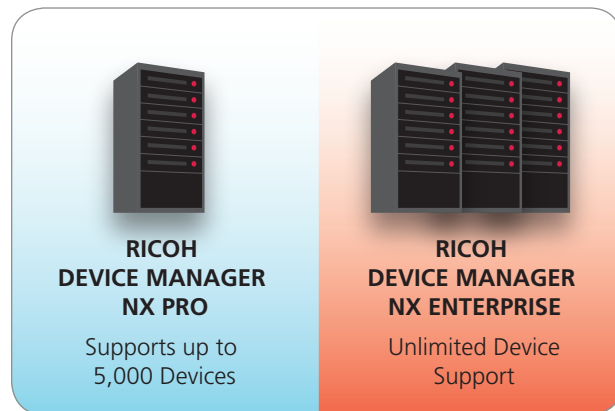


Optimize your enterprise fleet

Your organization has invested significantly in a wide range of output devices. Each is designed to streamline workflow and improve productivity. But, with hundreds or even thousands of these devices—and even more users—how do you know if they're being used efficiently? RICOH® Device Manager NX Pro and Device Manager NX Enterprise are on-site device management software solutions that give you exceptional control over your entire enterprise fleet. Each allows administrators to monitor and manage networked and local devices from a variety of manufacturers—from a convenient centralized location. Set global rules, automate service tasks and run detailed reports to optimize efficiency. Use it to manage your fleet proactively and allocate resources strategically to reduce total cost of ownership.

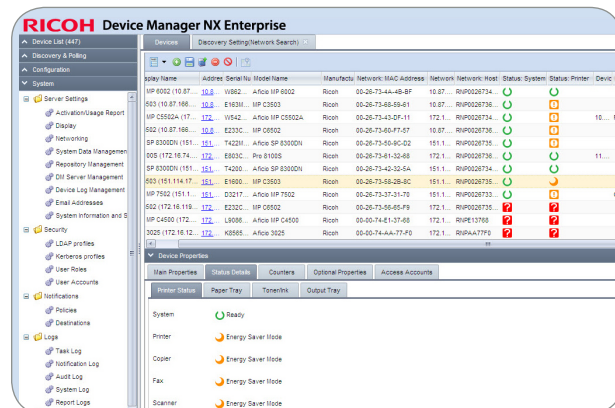
Optimal performance designed for you

Whether you manage output devices at a single site, or have them spread out over several sites, Ricoh offers an option for administrators to control the entire fleet from a centralized location. Ricoh Device Manager NX Pro is a single-server deployment that supports up to 5,000 devices. Ricoh Device Manager NX Enterprise supports an unlimited amount of devices (5,000 per Device Manager NX Server), in multiple locations. Each location can have a unique device management server that reports to a core server so centralized management and reporting can be performed with ease. Both solutions offer detailed reports with critical usage data to help administrators make more informed decisions to optimize performance.



Take advantage of advanced capabilities

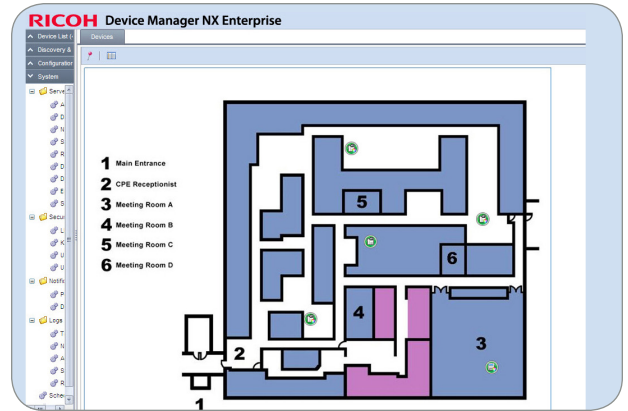
With its state-of-the-art services-led platform, Ricoh output devices can simplify a wide range of customizable tasks and streamline workflow. Ricoh Device Manager NX Pro and Device Manager NX Enterprise are designed to leverage these capabilities. Administrators can perform key tasks via an enhanced, intuitive Web user interface and even monitor USB-connected devices as well as third-party devices. The administrator simply specifies the network to search, and the solutions automatically sort devices based on a wide range of attributes.



Simplify how you manage the fleet

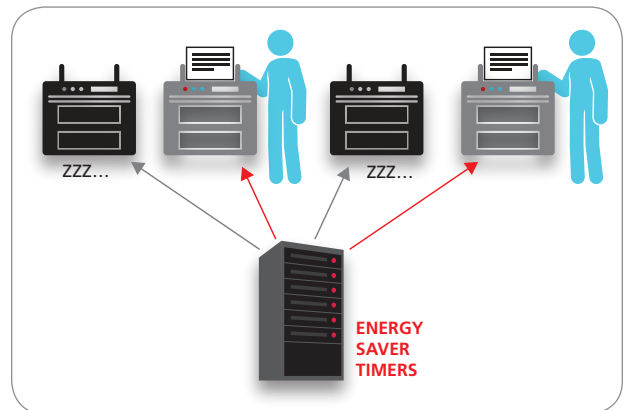
Manage to reduce costs and maximize resources

Optimizing thousands of devices is easy when you can do it all from one place. The intuitive interface simplifies how administrators can track and locate devices across the enterprise. Check status and activity on every device at once. Use filters and custom views to find the information you need quickly. Adjust settings on individual devices or group multiple devices for fast, easy identification and status updates. Firmware upgrades can be batched to maximize uptime. It also offers authentication so user roles and accounts can be assigned with ease. In addition, it includes device mapping, so you know exactly where devices are located via a detailed floor plan.



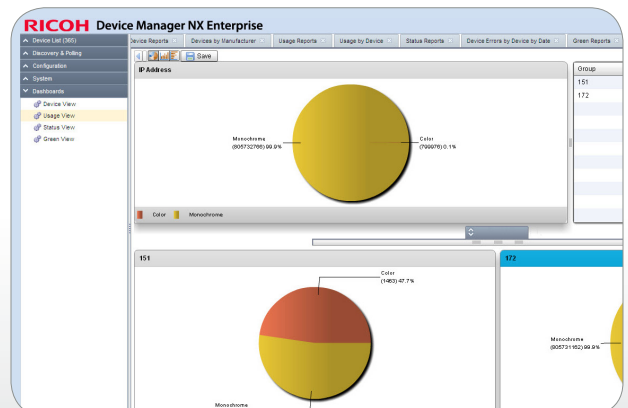
Control how you organize your fleet

Efficiency can be emulated. Use device cloning to export select settings from one Ricoh device to create a template, which can be assigned to other Ricoh services-led platform devices. Batch configurations enable you to establish settings for entire groups of devices to standardize workflow in only a few timesaving steps. With the device ecology indicator log on the Ricoh Device Manager NX Enterprise solution, energy-conscious administrators can calculate CO2 and paper consumption. Energy Saver Timers can also be set to conserve energy and help ensure efficient fleet operation.



Visualize optimal efficiency

Productivity is easy to spot—especially when you have access to a wide range of easy-to-read, detailed usage reports. Access the information via a convenient Web-based interface to analyze performance and to make more informed decisions for individual devices, a batch of devices, or for your entire fleet. It allows you to schedule audits to help ensure configuration compliance. You'll also receive automated alerts to help you identify areas of concern for faster, more proactive maintenance. The Ricoh Device Manager NX Enterprise solution features a dashboard that provides a graphical representation of key data, making it perfect for sharing information in meetings.



Device Manager NX Pro and Device Manager NX Enterprise

MANAGE

Device Status Information

- Usage per device
- Security auditing



CONTROL

Configuration

- Device settings
- Firmware

- SDK Application
- Logs



VISUALIZE

Reporting

- Device Summary
- Counter
- Usage, Consumable
- Status
- Green

Dashboards

- (Enterprise Version Only)
- Device Summary
 - Usage
 - Status
 - Green



Ricoh Device Manager NX Pro and Device Manager NX Enterprise are comprehensive fleet management solutions that allow global organizations to optimize performance across the enterprise from a centralized location.

Specifications

SYSTEM REQUIREMENTS

Item	Specification	Device Manager NX Pro	Device Manager NX Enterprise
Server Spec	Minimum: CPU: Intel Core i5/i7 or better; or Intel Xeon X3400 series or better; or AMD Athlon X2/Phenom or better or AMD Opteron 1300/2300/8300 series or better Available Memory: 2 GB Available HDD space: 2 GB (excluding database) Recommended: CPU: Intel Xeon X3500 series or better; or AMD Opteron 4100/6100 series or better Available Memory: 4 GB Available HDD space: 3 GB (excluding database)	√	Core & DM Server(s)
OS	Server environment: Windows Server 2008 Std/Ent SP1+ (32/64-bit) Windows Server 2008 R2 Std/Ent SP1+ (64-bit) Windows Server 2012 Std/Ent (64-bit) Client environment: Any environment with supported web browser	√	√
Web Server	Internal web server (Jetty) IIS 7, 7.5, 8 DMNX uses a Jetty Web Server by default. However, you can configure an IIS server to redirect IIS requests to Jetty.	√	√
Database	Standard: Microsoft SQL Server 2012 Express Edition Optional external databases: Microsoft SQL Server 2008 (Workgroup, Standard, Enterprise) Microsoft SQL Server 2008 R2 (Workgroup, Standard, Enterprise) Microsoft SQL Server 2012 (Workgroup, Standard, Enterprise)	Standard	Standard
Virtual Environment	VMWare ESX 4 VMWare ESXi 4.1, 5 Windows Server 2008 Hyper-V 2.0	√	√
Browser	Firefox 17 ESR Internet Explorer 8, 9, and 10 Safari 6.0	√	√

FMA AGENT CLIENT PC SPECIFICATIONS (USB CONNECTED DEVICES)

Item	Specification
PC Spec	CPU: Intel Pentium4 or better (500MHz or higher) Available Memory: 512 MB Available HDD space: 200 MB (For installation 100 MB)
OS	Windows XP Home, Professional (32-bit) Windows Vista Premium, Business, Enterprise, Ultimate (32/64-bit) Windows 7 Home Premium, Professional, Enterprise, Ultimate (32/64-bit) Windows 8 (base), Professional, Enterprise (32/64-bit)
Windows Installer	2.0 or higher
Net Framework	2.0 or higher

FMA AGENT – SUPPORTED DEVICES VIA USB CONNECTION

Device Type	Specification
Ricoh Device	Ricoh devices that have Ricoh PJJ command or Primax PJJ command
Other Vendors' Device	Non-Ricoh devices that do not have Ricoh PJJ command and Primax PJJ command

RICOH
imagine. change.

www.ricoh-usa.com

Ricoh Americas Corporation, 70 Valley Stream Parkway, Malvern, PA 19355 1-800-63-RICOH
 ©2013 Ricoh Americas Corporation. All rights reserved. Ricoh® and the Ricoh logo are registered trademarks of Ricoh Company, Ltd. All other trademarks are the property of their respective owners.
 The content of this document, and the appearance, features and specifications of Ricoh products and services are subject to change from time to time without notice. Products are shown with optional features. While care has been taken to ensure the accuracy of this information, Ricoh makes no representation or warranties about the accuracy, completeness or adequacy of the information contained herein, and shall not be liable for any errors or omissions in these materials. Actual results will vary depending upon use of the products and services, and the conditions and factors affecting performance. The only warranties for Ricoh products and services are as set forth in the express warranty statements accompanying them.